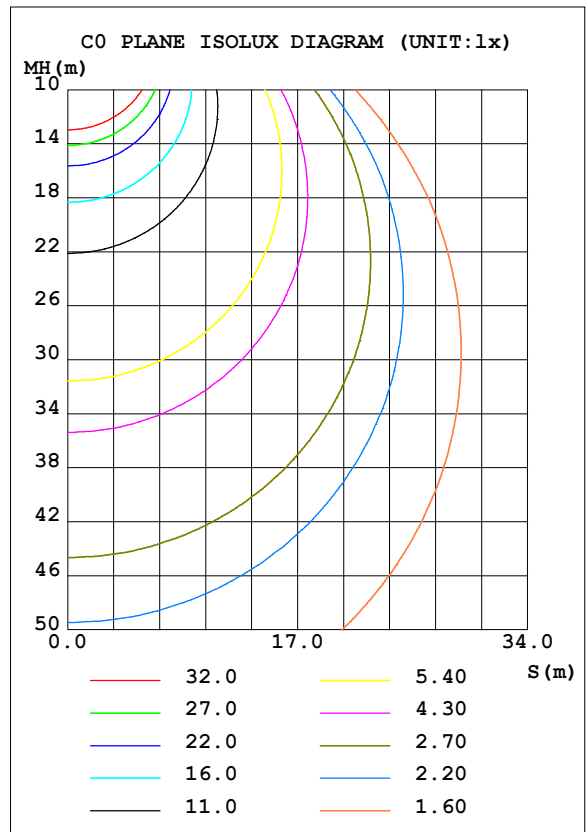
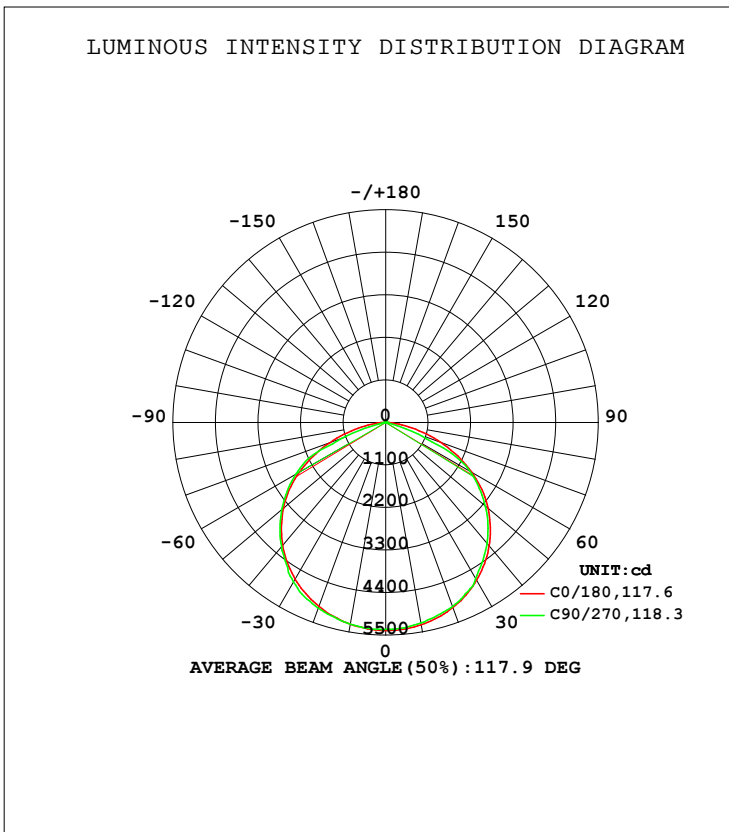


**LUMINAIRE PHOTOMETRIC TEST REPORT**

NAME: SPZLHB12F80-2532	TYPE:	WEIGHT:
SPEC.:	DIM.:	SERIAL No.:1
MFR.: EVERFINE	SUR.:	Shielding Angle:

DATA OF LAMP		PHOTOMETRIC DATA Eff: 198.41 lm/W			
MODEL	SPZLHB12F80	Imax (cd)	5384	S/MH (C0/180)	1.29
NOMINAL POWER (W)	80	LOR (%)	100.0	S/MH (C90/270)	1.32
RATED VOLTAGE (V)	AC 120-277	TOTAL FLUX (lm)	15704	η UP, DN (C0-180)	0.4, 48.7
NOMINAL FLUX (lm)	15704.2	CIE CLASS	DIRECT	η UP, DN (C180-360)	0.4, 50.4
LAMPS INSIDE	1	η up (%)	0.8	CIBSE SHR NOM	1.25
TEST VOLTAGE (V)	120	η down (%)	99.2	CIBSE SHR MAX	1.35



C Range: 0 - 360DEG  
 C Interval: 22.5DEG  
 Test Speed: HIGH  
 Temperature: 25.3DEG  
 Operators: DAMIN  
 Test Date: 2018-08-31

γ Range: 0 - 180DEG  
 γ Interval: 1.0DEG  
 Test System: EVERFINE GO-2000B\_V1 SYSTEM V2.0.361  
 Humidity: 65.0%  
 Test Distance: 6.476m [K=1.0000]  
 Remarks:

**ZONAL FLUX DIAGRAM**

ZONAL FLUX DIAGRAM:

$\gamma$	C0	C45	C90	C135	C180	C225	C270	C315	$\gamma$	$\Phi$ zone	$\Phi$ total	%lum, lamp
10	5310	5291	5263	5256	5294	5292	5293	5290	0- 10	507.9	507.9	3.23,3.23
20	5094	5064	5062	5020	5059	5079	5107	5081	10- 20	1467	1975	12.6,12.6
30	4708	4713	4654	4678	4685	4742	4766	4740	20- 30	2264	4239	27,27
40	4162	4125	4079	4103	4144	4228	4192	4213	30- 40	2784	7022	44.7,44.7
50	3455	3394	3368	3380	3452	3503	3510	3483	40- 50	2947	9969	63.5,63.5
60	2563	2530	2508	2529	2583	2669	2687	2636	50- 60	2720	12689	80.8,80.8
70	1520	1487	907.4	1511	1549	1691	1200	1636	60- 70	2019	14708	93.7,93.7
80	516.9	54.91	54.77	113.2	545.2	202.0	62.16	112.5	70- 80	782.1	15491	98.6,98.6
90	5.317	5.671	5.110	6.491	7.625	9.848	7.008	8.522	80- 90	84.77	15575	99.2,99.2
100	9.313	9.425	9.139	9.723	12.64	11.61	10.13	10.98	90-100	8.925	15584	99.2,99.2
110	14.23	13.90	13.85	14.57	18.45	17.04	15.88	16.07	100-110	13.63	15598	99.3,99.3
120	18.74	18.77	18.92	19.64	23.70	22.55	21.22	21.39	110-120	17.88	15616	99.4,99.4
130	22.89	22.96	23.78	23.78	28.23	26.80	26.39	25.82	120-130	20.51	15636	99.6,99.6
140	26.17	26.30	27.12	27.30	31.15	30.01	29.63	28.94	130-140	20.70	15657	99.7,99.7
150	29.07	29.43	30.22	30.58	33.03	32.41	31.85	31.17	140-150	18.59	15676	99.8,99.8
160	32.21	32.73	33.35	34.24	35.55	35.25	34.49	34.08	150-160	14.97	15691	99.9,99.9
170	35.68	36.28	37.06	37.51	37.27	37.92	37.43	37.01	160-170	10.05	15701	100,100
180	37.62	38.14	38.46	38.39	37.69	38.17	38.49	38.39	170-180	3.590	15704	100,100
DEG	LUMINOUS INTENSITY:cd									UNIT:lm		

Conical surface Flux(90deg): 8498.7 lm

%lum = 54.1%

%lamp = 54.1%

Conical surface Flux(120deg): 12689 lm

%lum = 80.8%

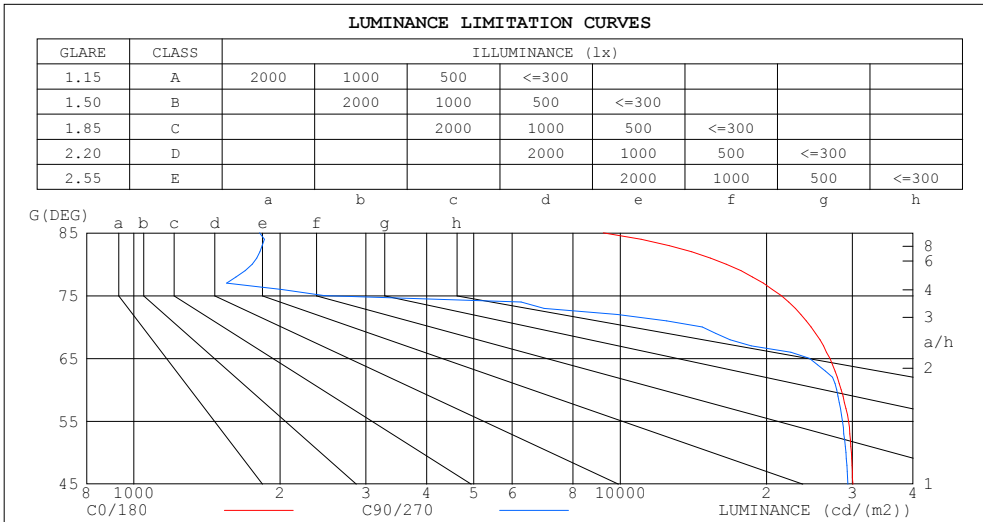
%lamp = 80.8%

C Range: 0 - 360DEG  
 C Interval: 22.5DEG  
 Test Speed: HIGH  
 Temperature:25.3DEG  
 Operators:DAMIN  
 Test Date:2018-08-31

$\gamma$  Range: 0 - 180DEG  
 $\gamma$  Interval: 1.0DEG  
 Test System:EVERFINE GO-2000B\_V1 SYSTEM V2.0.361  
 Humidity:65.0%  
 Test Distance:6.476m [K=1.0000]  
 Remarks:

**LUMINANCE LIMITATION CURVES**

<b>NAME:</b> SPZLHB12F80-2532	<b>TYPE:</b>	<b>WEIGHT:</b>
<b>SPEC.:</b>	<b>DIM.:</b>	<b>SERIAL No.:</b> 1
<b>MFR.:</b> EVERFINE	<b>SUR.:</b>	<b>Shielding Angle:</b>



LUMINANCE cd/(m2)		
G (DEG)	C0/180	C90/270
85	9241	1815
80	16536	1752
75	21456	2465
70	24695	14739
65	27001	24503
60	28480	27862
55	29467	28649
50	29861	29113
45	30095	29405

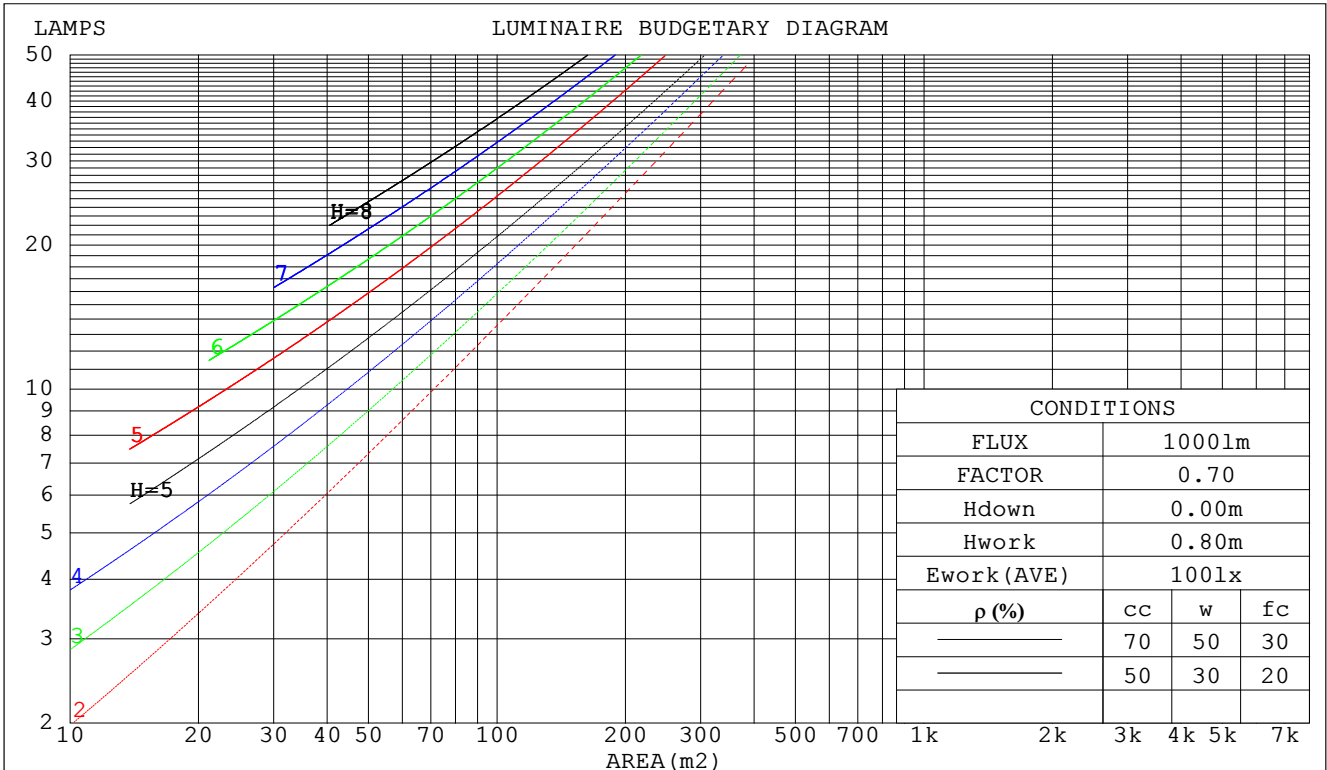
C Range: 0 - 360DEG  
 C Interval: 22.5DEG  
 Test Speed: HIGH  
 Temperature: 25.3DEG  
 Operators: DAMIN  
 Test Date: 2018-08-31

$\gamma$  Range: 0 - 180DEG  
 $\gamma$  Interval: 1.0DEG  
 Test System: EVERFINE GO-2000B\_V1 SYSTEM V2.0.361  
 Humidity: 65.0%  
 Test Distance: 6.476m [K=1.0000]  
 Remarks:

**CU AND LUMINAIRE BUDGETARY ESTIMATE DIAGRAM**

<b>NAME:</b> SPZLHB12F80-2532	<b>TYPE:</b>	<b>WEIGHT:</b>
<b>SPEC.:</b>	<b>DIM.:</b>	<b>SERIAL No.:</b> 1
<b>MFR.:</b> EVERFINE	<b>SUR.:</b>	<b>Shielding Angle:</b>

$\rho_{cc}$	80%			70%			50%			30%			10%			0
$\rho_w$	50%	30%	10%	50%	30%	10%	50%	30%	10%	50%	30%	10%	50%	30%	10%	0
$\rho_{fc}$	20%			20%			20%			20%			20%			0
<b>RCR</b>	<b>RCR:Room Cavity Ratio</b>															
	<b>Coefficients of Utilization(CU)</b>															
0.0	1.19	1.19	1.19	1.16	1.16	1.16	1.11	1.11	1.11	1.06	1.06	1.06	1.01	1.01	1.01	.99
1.0	1.05	1.01	.97	1.02	.99	.95	.98	.95	.92	.94	.92	.89	.90	.88	.87	.84
2.0	.92	.85	.79	.90	.84	.78	.86	.81	.76	.83	.78	.75	.79	.76	.73	.71
3.0	.80	.72	.66	.79	.71	.65	.76	.69	.64	.73	.67	.63	.70	.66	.62	.59
4.0	.71	.62	.56	.70	.62	.55	.67	.60	.54	.65	.59	.54	.62	.57	.53	.51
5.0	.63	.54	.48	.62	.54	.48	.60	.53	.47	.58	.51	.46	.56	.50	.46	.44
6.0	.57	.48	.42	.56	.48	.41	.54	.47	.41	.52	.46	.41	.51	.45	.40	.38
7.0	.52	.43	.37	.51	.42	.36	.49	.42	.36	.48	.41	.36	.46	.40	.36	.34
8.0	.47	.38	.33	.46	.38	.32	.45	.37	.32	.43	.37	.32	.42	.36	.32	.30
9.0	.43	.35	.29	.42	.35	.29	.41	.34	.29	.40	.33	.29	.39	.33	.29	.27
10.0	.40	.32	.26	.39	.31	.26	.38	.31	.26	.37	.31	.26	.36	.30	.26	.24



C Range: 0 - 360DEG  
 C Interval: 22.5DEG  
 Test Speed: HIGH  
 Temperature:25.3DEG  
 Operators:DAMIN  
 Test Date:2018-08-31

$\gamma$  Range: 0 - 180DEG  
 $\gamma$  Interval: 1.0DEG  
 Test System:EVERFINE GO-2000B\_v1 SYSTEM V2.0.361  
 Humidity:65.0%  
 Test Distance:6.476m [K=1.0000]  
 Remarks:

**WEC AND CCEC**

NAME: SPZLHB12F80-2532	TYPE:	WEIGHT:
SPEC.:	DIM.:	SERIAL No.:1
MFR.: EVERFINE	SUR.:	Shielding Angle:

$\rho_{CC}$	80%			70%			50%			30%			10%			0
$\rho_w$	50%	30%	10%	50%	30%	10%	50%	30%	10%	50%	30%	10%	50%	30%	10%	0
$\rho_{fc}$	20%			20%			20%			20%			20%			0
RCR	RCR:Room Cavity Ratio						Wall Exitance Coefficients (WEC)									
0.0																
1.0	.289	.164	.052	.282	.161	.051	.268	.154	.049	.256	.147	.047	.244	.141	.046	
2.0	.280	.153	.047	.273	.150	.046	.261	.145	.045	.250	.140	.044	.240	.136	.043	
3.0	.262	.140	.042	.257	.138	.041	.246	.133	.041	.236	.129	.040	.227	.126	.039	
4.0	.244	.127	.037	.239	.125	.037	.230	.122	.036	.221	.119	.036	.213	.116	.035	
5.0	.227	.116	.034	.223	.114	.033	.214	.112	.033	.206	.109	.032	.199	.106	.032	
6.0	.211	.106	.030	.207	.105	.030	.200	.102	.030	.193	.100	.029	.186	.098	.029	
7.0	.197	.098	.028	.194	.097	.028	.187	.095	.027	.181	.093	.027	.175	.091	.027	
8.0	.185	.090	.025	.181	.089	.025	.175	.088	.025	.170	.086	.025	.164	.084	.025	
9.0	.173	.084	.023	.170	.083	.023	.165	.082	.023	.160	.080	.023	.155	.079	.023	
10.0	.163	.078	.022	.160	.077	.022	.156	.076	.021	.151	.075	.021	.146	.074	.021	

$\rho_{CC}$	80%			70%			50%			30%			10%			0
$\rho_w$	50%	30%	10%	50%	30%	10%	50%	30%	10%	50%	30%	10%	50%	30%	10%	0
$\rho_{fc}$	20%			20%			20%			20%			20%			0
RCR	RCR:Room Cavity Ratio						Ceiling Cavity Exitance Coefficients (CCEC)									
0.0	.197	.197	.197	.168	.168	.168	.115	.115	.115	.066	.066	.066	.021	.021	.021	
1.0	.185	.163	.142	.158	.140	.122	.108	.096	.085	.062	.056	.049	.020	.018	.016	
2.0	.177	.138	.106	.152	.119	.091	.104	.082	.064	.060	.048	.037	.019	.016	.012	
3.0	.169	.121	.082	.145	.104	.071	.100	.072	.050	.058	.042	.029	.019	.014	.010	
4.0	.162	.107	.065	.139	.093	.057	.096	.065	.040	.055	.038	.024	.018	.012	.008	
5.0	.155	.097	.054	.133	.084	.047	.092	.059	.033	.053	.034	.020	.017	.011	.006	
6.0	.148	.089	.046	.127	.077	.040	.088	.054	.028	.051	.032	.017	.016	.010	.006	
7.0	.141	.082	.040	.122	.071	.035	.084	.050	.025	.049	.029	.015	.016	.010	.005	
8.0	.135	.076	.035	.116	.066	.031	.080	.046	.022	.047	.027	.013	.015	.009	.004	
9.0	.129	.071	.032	.111	.062	.028	.077	.043	.020	.045	.026	.012	.015	.008	.004	
10.0	.123	.067	.029	.106	.058	.025	.074	.041	.018	.043	.024	.011	.014	.008	.004	

C Range: 0 - 360DEG  
 C Interval: 22.5DEG  
 Test Speed: HIGH  
 Temperature:25.3DEG  
 Operators:DAMIN  
 Test Date:2018-08-31

$\gamma$  Range: 0 - 180DEG  
 $\gamma$  Interval: 1.0DEG  
 Test System:EVERFINE GO-2000B\_V1 SYSTEM V2.0.361  
 Humidity:65.0%  
 Test Distance:6.476m [K=1.0000]  
 Remarks:

**UGR(Unified Glare Rating) Table**

NAME: SPZLHB12F80-2532					TYPE:					WEIGHT:				
SPEC.:					DIM.:					SERIAL No.:1				
MFR.: EVERFINE					SUR.:					Shielding Angle:				
ceiling/cavity	0.7	0.7	0.5	0.5	0.3	0.7	0.7	0.5	0.5	0.3				
walls	0.5	0.3	0.5	0.3	0.3	0.5	0.3	0.5	0.3	0.3				
working plane	0.2	0.2	0.2	0.2	0.2	0.2	0.2	0.2	0.2	0.2				
Room dimensions	Viewed crosswise					Viewed endwise								
x = 2H y = 2H	15.2	16.7	15.5	16.9	17.1	15.1	16.6	15.4	16.8	17.0				
3H	16.6	18.0	16.9	18.2	18.5	15.9	17.3	16.2	17.6	17.8				
4H	17.1	18.4	17.5	18.7	19.0	15.9	17.2	16.2	17.5	17.7				
6H	17.4	18.6	17.7	18.9	19.2	15.8	17.0	16.1	17.3	17.6				
8H	17.4	18.6	17.8	18.9	19.2	15.7	16.9	16.1	17.2	17.5				
12H	17.4	18.6	17.8	18.9	19.2	15.7	16.8	16.0	17.1	17.4				
4H 2H	15.8	17.1	16.1	17.4	17.6	15.7	17.0	16.0	17.3	17.5				
3H	17.4	18.5	17.7	18.8	19.1	16.6	17.8	17.0	18.1	18.4				
4H	17.9	19.0	18.3	19.3	19.7	16.6	17.6	17.0	18.0	18.3				
6H	18.3	19.2	18.7	19.6	20.0	16.5	17.4	16.9	17.8	18.2				
8H	18.4	19.2	18.8	19.6	20.0	16.5	17.3	16.9	17.7	18.1				
12H	18.4	19.1	18.8	19.5	19.9	16.4	17.2	16.9	17.6	18.0				
8H 4H	17.9	18.8	18.4	19.2	19.6	16.7	17.5	17.1	17.9	18.3				
6H	18.4	19.1	18.8	19.5	19.9	16.6	17.3	17.1	17.7	18.2				
8H	18.4	19.0	18.9	19.5	19.9	16.6	17.2	17.0	17.6	18.1				
12H	18.4	19.0	18.9	19.4	19.9	16.5	17.1	17.0	17.5	18.0				
12H 4H	17.9	18.7	18.3	19.1	19.5	16.7	17.4	17.1	17.8	18.2				
6H	18.3	18.9	18.8	19.4	19.8	16.6	17.2	17.1	17.6	18.1				
8H	18.4	18.9	18.9	19.4	19.9	16.6	17.1	17.0	17.5	18.0				
Variations with the observer position at spacings:														
S = 1.0H	+ 0.2 / - 0.3					+ 0.3 / - 0.6								
1.5H	+ 0.2 / - 0.3					+ 0.4 / - 0.6								
2.0H	+ 0.3 / - 0.4					+ 0.4 / - 1.1								

CIE Pub.117, 15704 lm Total Lamp Luminous Flux Correct (8log(F/F0) = 9.6)

C Range: 0 - 360DEG  
 C Interval: 22.5DEG  
 Test Speed: HIGH  
 Temperature:25.3DEG  
 Operators:DAMIN  
 Test Date:2018-08-31

γ Range: 0 - 180DEG  
 γ Interval: 1.0DEG  
 Test System:EVERFINE GO-2000B\_V1 SYSTEM V2.0.361  
 Humidity:65.0%  
 Test Distance:6.476m [K=1.0000]  
 Remarks:

**UTILIZATION FACTORS TABLE**

<b>NAME:</b> SPZLHB12F80-2532	<b>TYPE:</b>	<b>WEIGHT:</b>
<b>SPEC.:</b>	<b>DIM.:</b>	<b>SERIAL No.:</b> 1
<b>MFR.:</b> EVERFINE	<b>SUR.:</b>	<b>Shielding Angle:</b>

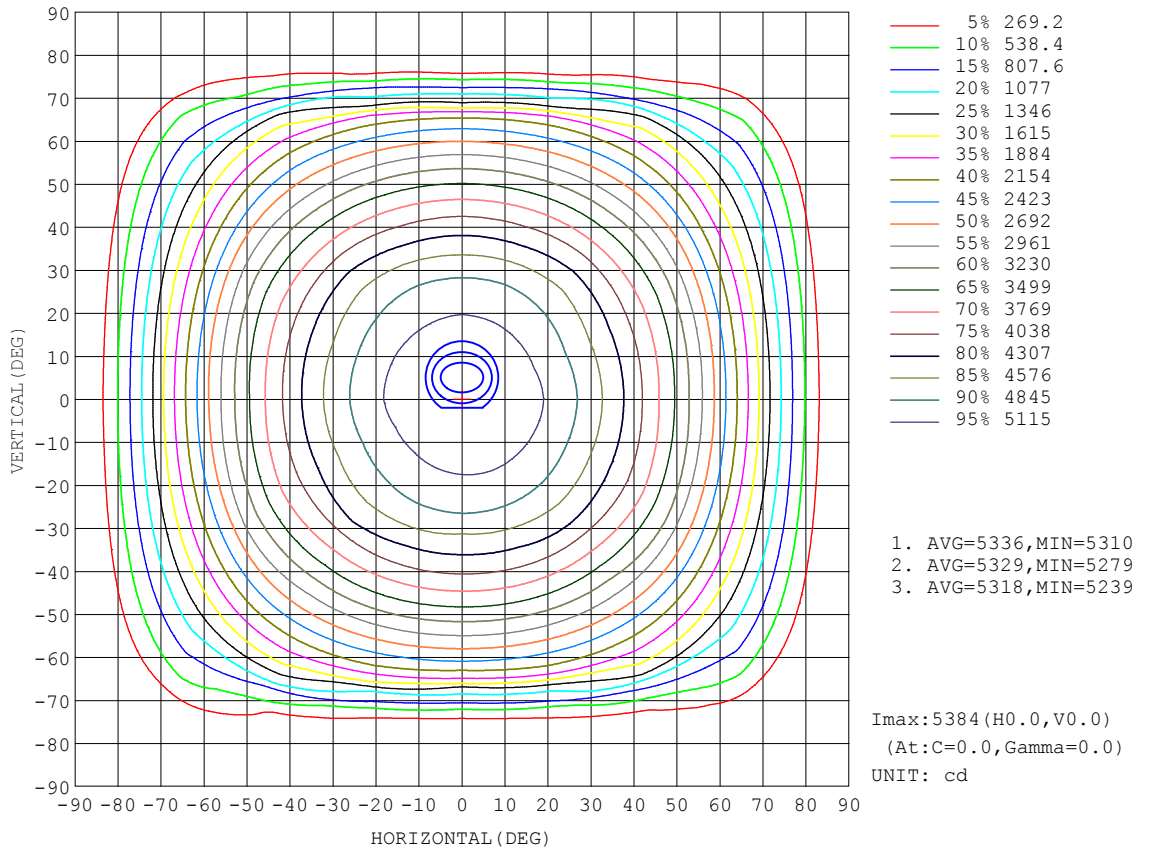
REFLECTANCE										
Ceiling	0.8	0.8	0.8	0.7	0.7	0.7	0.5	0.5	0.5	0
Walls	0.7	0.5	0.3	0.7	0.5	0.3	0.7	0.5	0.3	0
Working plane	0.2	0.2	0.2	0.2	0.2	0.2	0.2	0.2	0.2	0
ROOM INDEX	UTILIZATION FACTORS (PERCENT) $k(RI) \times RCR = 5$									
k = 0.60	57	46	39	57	45	39	55	45	38	32
0.80	68	56	49	67	56	49	65	55	48	41
1.00	76	65	58	75	65	58	73	66	57	50
1.25	84	73	66	82	73	66	79	71	65	58
1.50	89	79	72	87	78	72	84	76	71	63
2.00	96	87	81	94	86	80	90	84	79	71
2.50	100	92	86	97	91	85	94	88	83	75
3.00	103	96	91	101	95	90	97	92	88	79
4.00	107	101	97	104	100	96	100	96	93	84
5.00	109	105	101	107	103	99	102	99	96	87
ROOM INDEX	UF(total)									Direct
According to DIN EN 13032-2 2004			Suspended				SHRNOM = 1.25			

C Range: 0 - 360DEG  
 C Interval: 22.5DEG  
 Test Speed: HIGH  
 Temperature:25.3DEG  
 Operators:DAMIN  
 Test Date:2018-08-31

$\gamma$  Range: 0 - 180DEG  
 $\gamma$  Interval: 1.0DEG  
 Test System:EVERFINE GO-2000B\_V1 SYSTEM V2.0.361  
 Humidity:65.0%  
 Test Distance:6.476m [K=1.0000]  
 Remarks:

**ISOCANDELA DIAGRAM**

NAME: SPZLHB12F80-2532	TYPE:	WEIGHT:
SPEC.:	DIM.:	SERIAL No.:1
MFR.: EVERFINE	SUR.:	Shielding Angle:



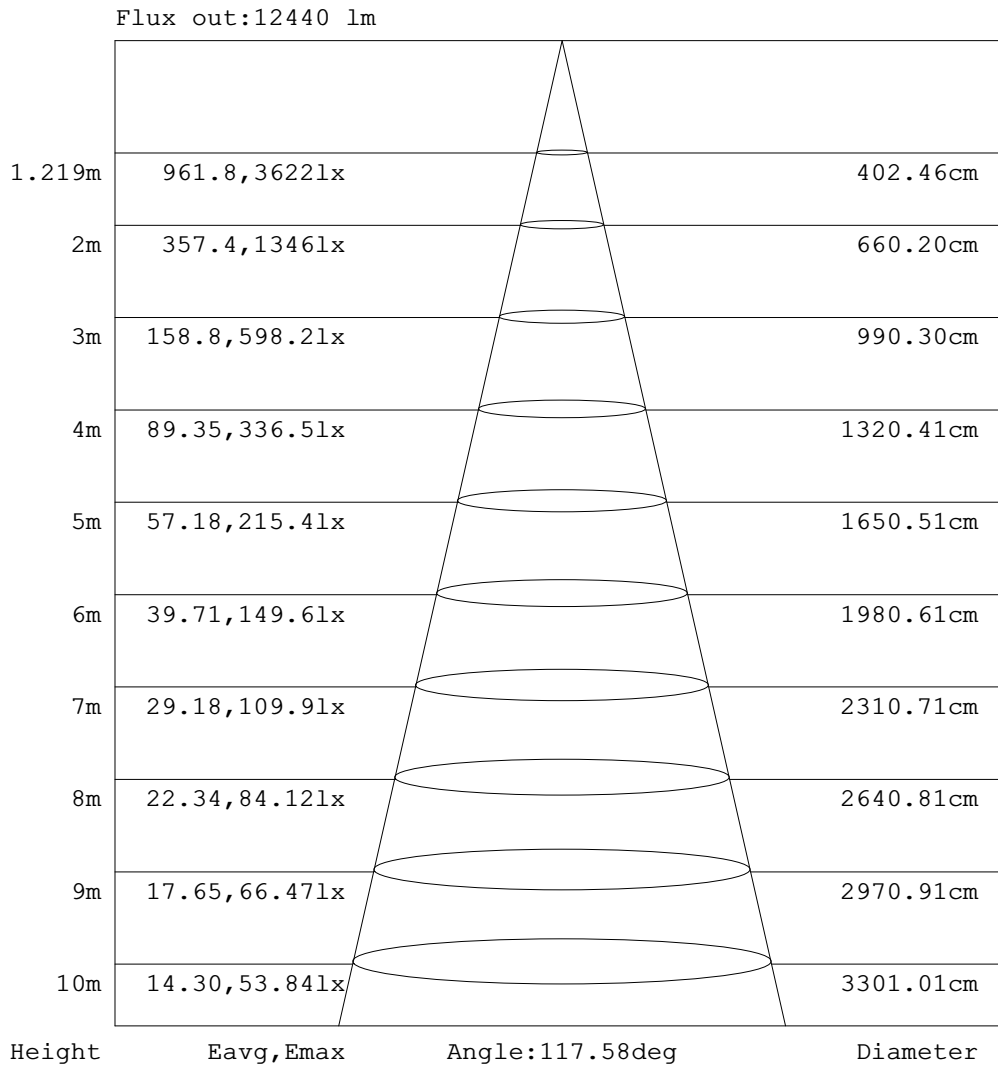
C Range: 0 - 360DEG  
 C Interval: 22.5DEG  
 Test Speed: HIGH  
 Temperature:25.3DEG  
 Operators:DAMIN  
 Test Date:2018-08-31

γ Range: 0 - 180DEG  
 γ Interval: 1.0DEG  
 Test System:EVERFINE GO-2000B\_v1 SYSTEM V2.0.361  
 Humidity:65.0%  
 Test Distance:6.476m [K=1.0000]  
 Remarks:



**AAI Figure**

NAME: SPZLHB12F80-2532	TYPE:	WEIGHT:
SPEC.:	DIM.:	SERIAL No.:1
MFR.: EVERFINE	SUR.:	Shielding Angle:



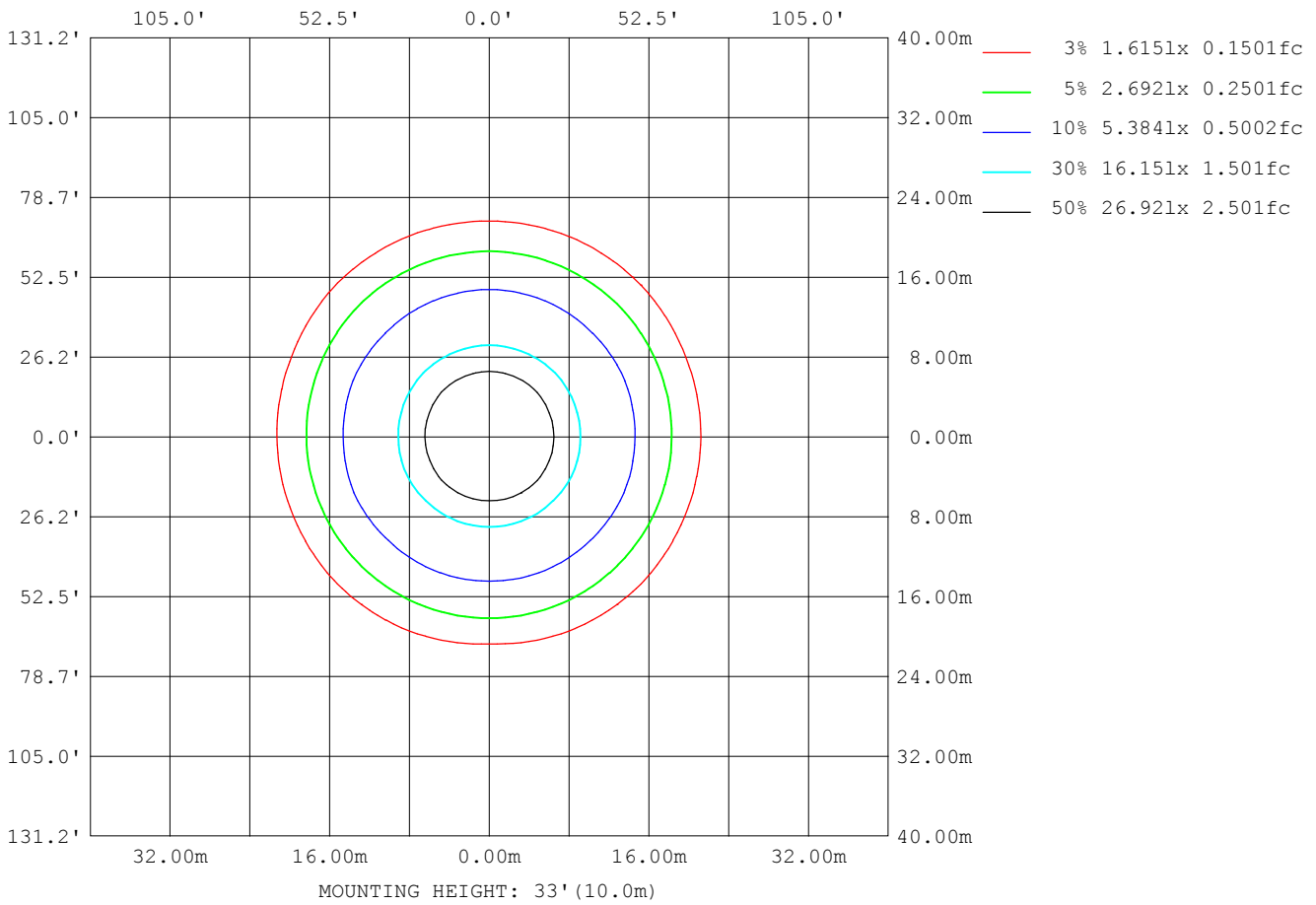
**Note:**The Curves indicate the illuminated area and the average illumination when the luminaire is at different distance.

C Range: 0 - 360DEG  
 C Interval: 22.5DEG  
 Test Speed: HIGH  
 Temperature:25.3DEG  
 Operators:DAMIN  
 Test Date:2018-08-31

$\gamma$  Range: 0 - 180DEG  
 $\gamma$  Interval: 1.0DEG  
 Test System:EVERFINE GO-2000B\_V1 SYSTEM V2.0.361  
 Humidity:65.0%  
 Test Distance:6.476m [K=1.0000]  
 Remarks:

**ISOLUX DIAGRAM**

<b>NAME:</b> SPZLHB12F80-2532	<b>TYPE:</b>	<b>WEIGHT:</b>
<b>SPEC.:</b>	<b>DIM.:</b>	<b>SERIAL No.:</b> 1
<b>MFR.:</b> EVERFINE	<b>SUR.:</b>	<b>Shielding Angle:</b>



C Range: 0 - 360DEG  
 C Interval: 22.5DEG  
 Test Speed: HIGH  
 Temperature: 25.3DEG  
 Operators: DAMIN  
 Test Date: 2018-08-31

γ Range: 0 - 180DEG  
 γ Interval: 1.0DEG  
 Test System: EVERFINE GO-2000B\_V1 SYSTEM V2.0.361  
 Humidity: 65.0%  
 Test Distance: 6.476m [K=1.0000]  
 Remarks:

**LED Avg.L Report**

NAME: SPZLHB12F80-2532	TYPE:	WEIGHT:
SPEC.:	DIM.:	SERIAL No.:1
MFR.: EVERFINE	SUR.:	Shielding Angle:

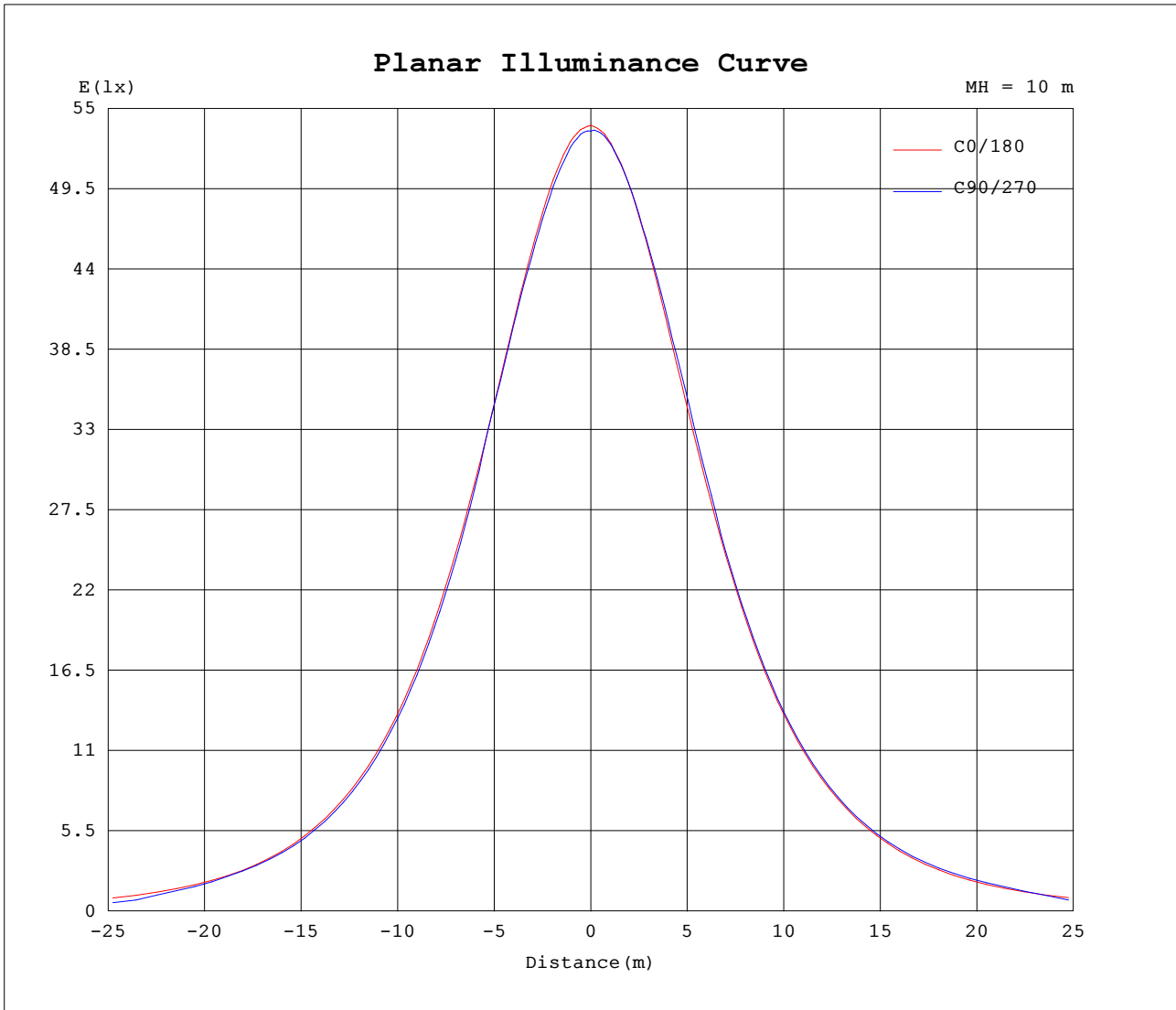
AvgL	cd/m2
L_0~180 (65) av	27164
L_0~180 (75) av	21731
L_0~180 (85) av	10092
L_90~270 (65) av	26791
L_90~270 (75) av	6087
L_90~270 (85) av	2189
L_45 (65) av	27813
L_45 (75) av	15268
L_45 (85) av	2379

Standard: GB/T 29293-2012

C Range: 0 - 360DEG  
 C Interval: 22.5DEG  
 Test Speed: HIGH  
 Temperature:25.3DEG  
 Operators:DAMIN  
 Test Date:2018-08-31

$\gamma$  Range: 0 - 180DEG  
 $\gamma$  Interval: 1.0DEG  
 Test System:EVERFINE GO-2000B\_V1 SYSTEM V2.0.361  
 Humidity:65.0%  
 Test Distance:6.476m [K=1.0000]  
 Remarks:

**Planar Illuminance Curve**



C Range: 0 - 360DEG  
 C Interval: 22.5DEG  
 Test Speed: HIGH  
 Temperature: 25.3DEG  
 Operators: DAMIN  
 Test Date: 2018-08-31

$\gamma$  Range: 0 - 180DEG  
 $\gamma$  Interval: 1.0DEG  
 Test System: EVERFINE GO-2000B\_V1 SYSTEM V2.0.361  
 Humidity: 65.0%  
 Test Distance: 6.476m [K=1.0000]  
 Remarks:

LUMINOUS DISTRIBUTION INTENSITY DATA

NAME: SPZLHB12F80-2532	TYPE:	WEIGHT:
SPEC.:	DIM.:	SERIAL No.:1
MFR.: EVERFINE	SUR.:	Shielding Angle:

Table--1

UNIT: cd

C (DEG) \ γ (DEG)	0	22.5	45	67.5	90	112.5	135	157.5	180	202.5	225	247.5	270	292.5	315	337.5			
0	5384	5375	5362	5356	5346	5350	5342	5346	5384	5375	5362	5356	5346	5350	5342	5346			
5	5368	5356	5348	5336	5331	5325	5316	5318	5358	5352	5355	5345	5345	5339	5334	5337			
10	5310	5302	5291	5277	5263	5259	5256	5253	5294	5290	5292	5292	5293	5293	5290	5287			
15	5217	5201	5191	5182	5172	5159	5158	5161	5196	5193	5203	5201	5205	5210	5201	5194			
20	5094	5071	5064	5071	5062	5041	5020	5021	5059	5062	5079	5095	5107	5091	5081	5064			
25	4919	4900	4899	4925	4891	4893	4860	4849	4890	4894	4926	4948	4972	4951	4929	4891			
30	4708	4692	4713	4724	4654	4691	4678	4639	4685	4688	4742	4758	4766	4758	4740	4689			
35	4461	4444	4479	4395	4374	4370	4436	4399	4432	4453	4521	4500	4481	4509	4522	4449			
40	4162	4166	4125	4095	4079	4075	4103	4124	4144	4179	4228	4179	4192	4186	4213	4171			
45	3830	3851	3775	3758	3743	3739	3751	3829	3820	3878	3863	3860	3869	3858	3854	3865			
50	3455	3478	3394	3383	3368	3375	3380	3476	3452	3543	3503	3501	3510	3496	3483	3504			
55	3042	3040	2979	2974	2958	2963	2972	3075	3049	3127	3096	3108	3118	3099	3076	3102			
60	2563	2548	2530	2521	2508	2518	2529	2551	2583	2639	2669	2682	2687	2667	2636	2621			
65	2054	2036	2043	1976	1864	1979	2048	2047	2079	2119	2212	2217	2212	2198	2160	2072			
70	1520	1502	1487	987	907	988	1511	1522	1549	1593	1691	1288	1200	1246	1636	1546			
75	1000	980	570	292	115	295	643	1005	1025	1067	843	540	452	505	789	1029			
80	517	393	54.9	57.1	54.8	55.7	113	510	545	563	202	84.3	62.2	77.8	113	517			
85	145	32.9	34.2	31.6	28.5	31.2	32.3	28.4	172	67.3	42.0	41.7	40.2	41.1	40.9	36.2			
90	5.32	5.78	5.67	5.36	5.11	5.89	6.49	6.38	7.63	9.58	9.85	7.42	7.01	7.55	8.52	8.34			
95	7.08	7.46	7.61	7.07	6.90	7.20	7.77	7.59	9.92	9.65	9.00	8.20	7.61	7.98	8.56	9.04			
100	9.31	9.32	9.42	9.24	9.14	9.39	9.72	9.86	12.6	12.3	11.6	10.8	10.1	10.4	11.0	11.4			
105	11.8	11.7	11.5	11.4	11.5	11.7	12.1	12.4	15.5	15.1	14.4	13.7	13.1	13.2	13.5	14.0			
110	14.2	14.1	13.9	13.7	13.8	14.1	14.6	15.0	18.5	18.0	17.0	16.4	15.9	15.8	16.1	16.7			
115	16.6	16.5	16.4	16.2	16.4	16.6	17.2	17.6	21.2	20.7	19.8	19.0	18.5	18.4	18.8	19.3			
120	18.7	18.7	18.8	18.6	18.9	19.1	19.6	20.0	23.7	23.2	22.6	21.7	21.2	21.1	21.4	21.7			
125	20.9	20.9	20.9	21.1	21.5	21.6	21.8	22.3	26.1	25.6	24.8	24.3	23.8	23.7	23.7	24.1			
130	22.9	22.9	23.0	23.2	23.8	23.6	23.8	24.4	28.2	27.7	26.8	26.5	26.4	25.9	25.8	26.1			
135	24.6	24.6	24.7	25.0	25.5	25.3	25.6	26.3	29.9	29.5	28.6	28.2	28.2	27.7	27.6	27.8			
140	26.2	26.1	26.3	26.7	27.1	27.1	27.3	28.0	31.2	30.7	30.0	29.7	29.6	29.2	28.9	29.0			
145	27.6	27.7	27.9	28.2	28.7	28.7	29.0	29.5	32.1	31.6	31.2	30.8	30.8	30.3	30.1	30.1			
150	29.1	29.2	29.4	29.9	30.2	30.3	30.6	31.0	33.0	32.8	32.4	32.0	31.8	31.6	31.2	31.2			
155	30.5	30.7	30.9	31.5	31.7	31.9	32.3	32.7	34.2	34.0	33.7	33.4	33.2	32.9	32.5	32.4			
160	32.2	32.4	32.7	33.0	33.4	33.7	34.2	34.4	35.5	35.5	35.2	34.8	34.5	34.3	34.1	34.0			
165	34.1	34.2	34.6	34.9	35.4	35.7	36.1	36.1	36.8	36.9	36.8	36.4	36.2	35.8	35.6	35.5			
170	35.7	35.8	36.3	36.8	37.1	37.3	37.5	37.2	37.3	37.7	37.9	37.6	37.4	37.2	37.0	36.8			
175	36.8	36.9	37.3	37.8	38.1	38.2	38.2	37.8	37.7	37.9	38.5	38.5	38.5	38.4	38.0	37.6			
180	37.6	37.8	38.1	38.5	38.5	38.6	38.4	38.1	37.7	37.7	38.2	38.5	38.5	38.6	38.4	38.1			

C Range: 0 - 360DEG  
 C Interval: 22.5DEG  
 Test Speed: HIGH  
 Temperature: 25.3DEG  
 Operators: DAMIN  
 Test Date: 2018-08-31

γ Range: 0 - 180DEG  
 γ Interval: 1.0DEG  
 Test System: EVERFINE GO-2000B\_V1 SYSTEM V2.0.361  
 Humidity: 65.0%  
 Test Distance: 6.476m [K=1.0000]  
 Remarks: