

# BACKLIT PANEL

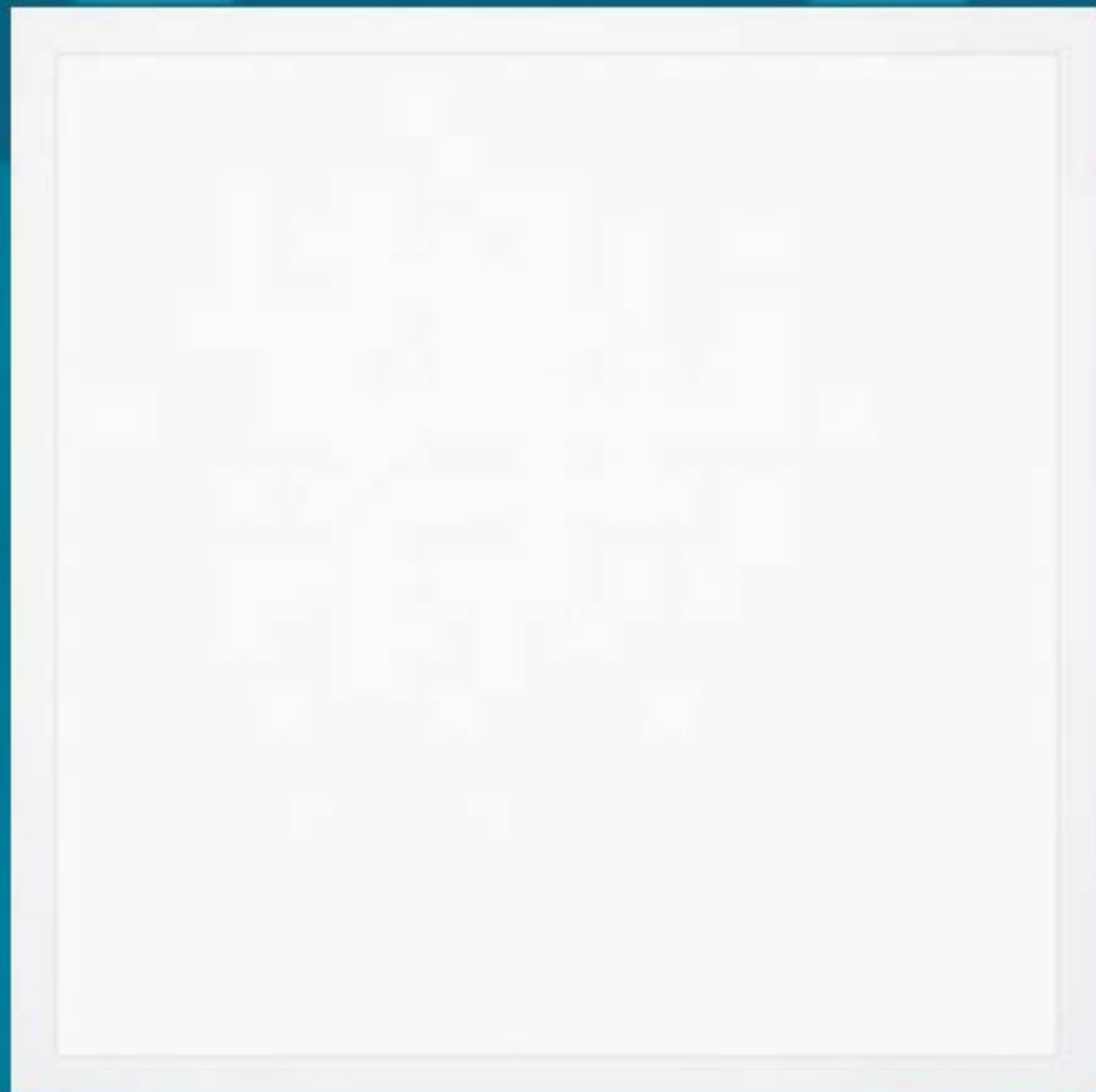
MODEL: PLB-VN



Market Leading Performance from 130LM/W to 160LM/W

**5** years  
warranty

**130-160** LM/W



- Regular Series
- Power & CCT Tunable Series
- 2.4G Wireless CCT Tunable Series



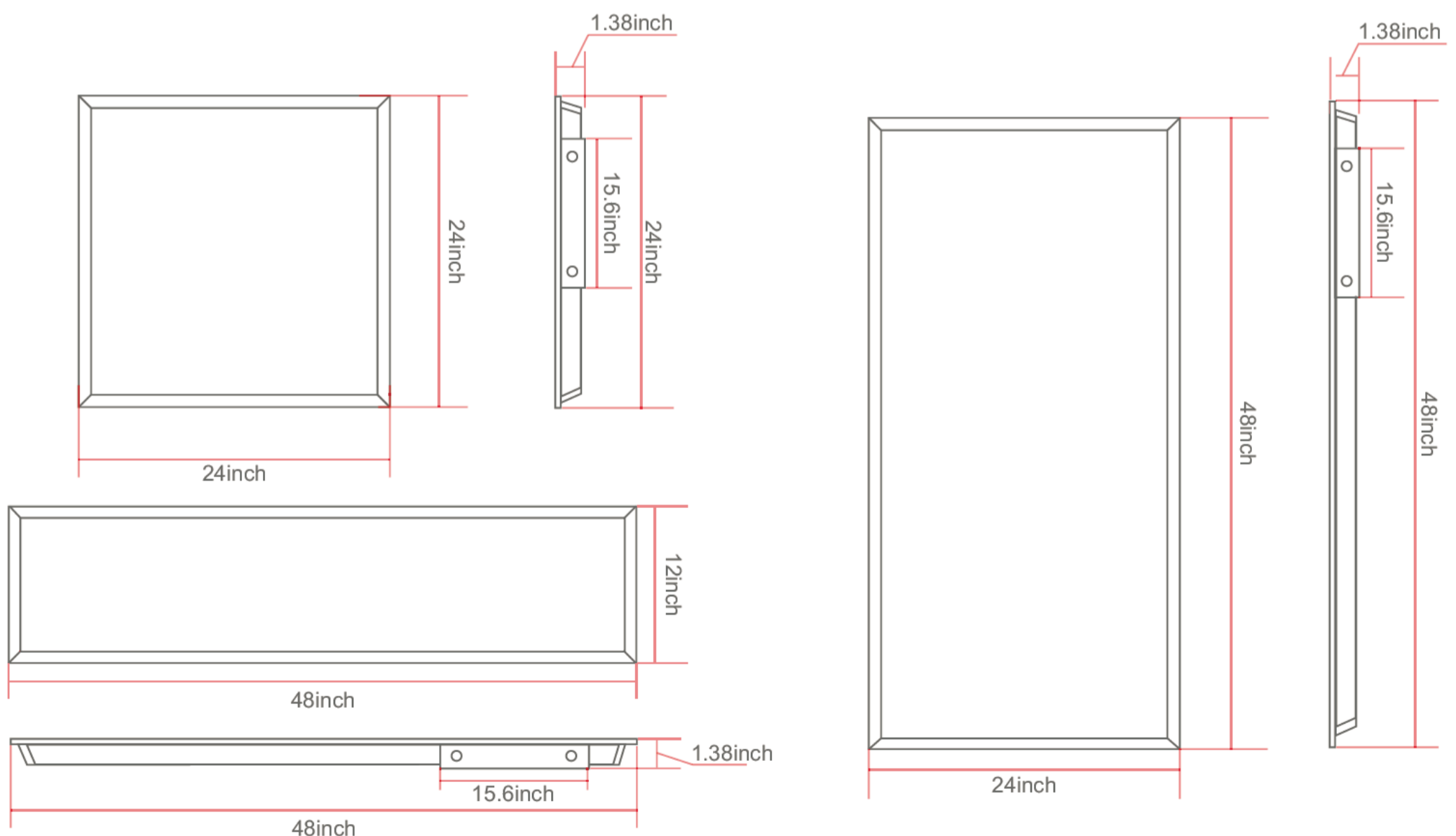
## LHB APPLICATIONS

NLV Lighting Backlit Panel luminaires are designed for a wide variety of applications for use in office buildings, retail shops, warehouses, manufacturing, gyms, and other industrial buildings. These fixtures are designed for 10 ft to 20 ft ceilings heights. The power and CCT tunability provides customers the option to use same fixture for multiple locations. A unique and intelligent IC control programmed driver provides consistent color mixing and protection of all electronics. All luminaires come with a high-quality diffuser providing added protection and glare control. These fixtures are energy-efficient replacements for linear fluorescent and HID fixtures.

## PRODUCT FEATURES

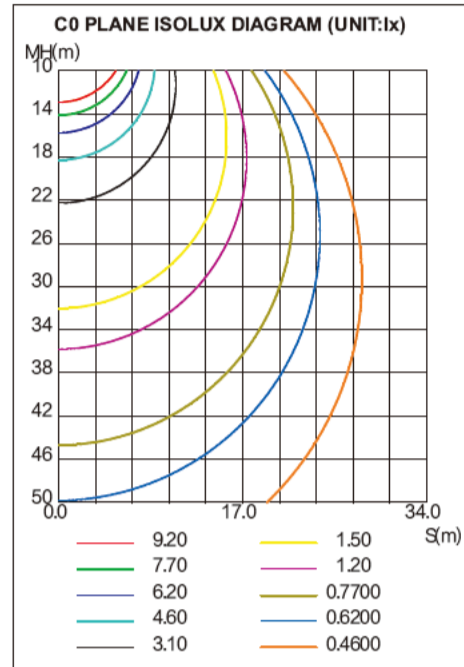
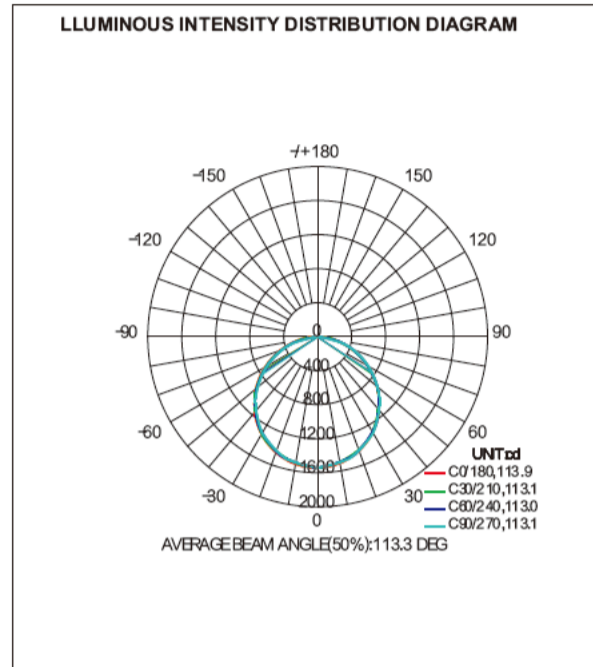
- Power Range: 20W to 60W
- Efficacy Range: 130 to 160 LM/W
- Tunable CCT and Power from 3000K to 5000K & 20W to 60W
- Operating Temperature: -40°C to 50°C
- Tier-1 LED suppliers; LM80 rated at CRI >80
- 120V to 277V and 120V to 347V
- PF >0.90, THD ≤ 15%
- Emergency battery back up option
- Motion Sensing and Dimming
- Standard 5 Year warranty

## PHYSICAL DIMENSIONS

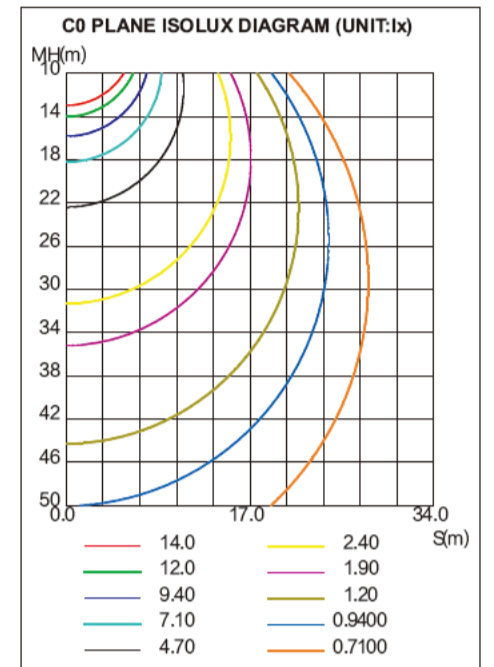
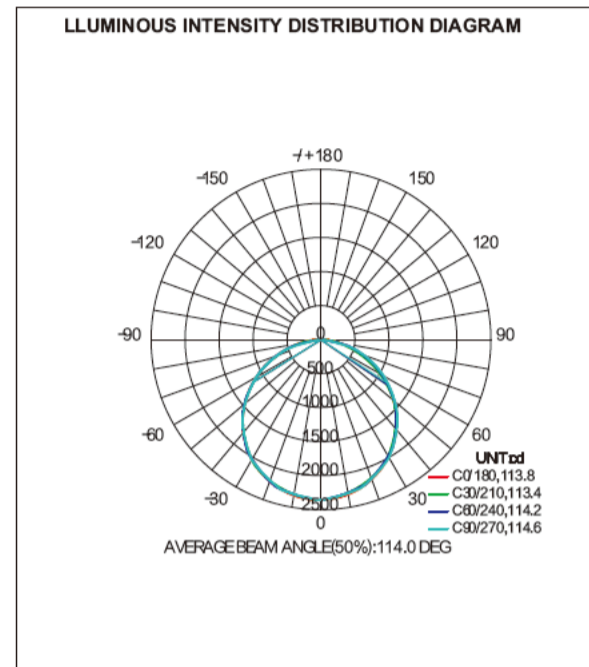


PHOTOMETRICS

24 x 24inch 35W



24 x 48inch 50W



APPLICATIONS

Regular Series



2.4G Wireless CCT Tunable Series

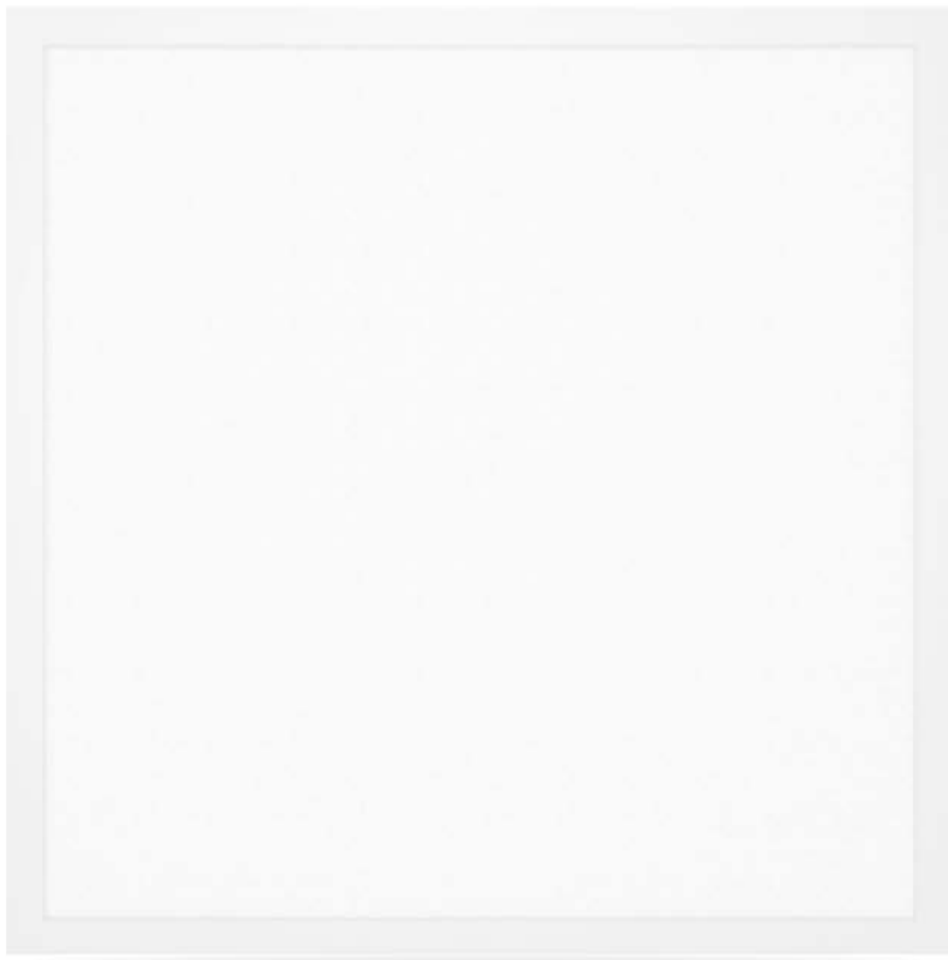


Power & CCT Tunable Series

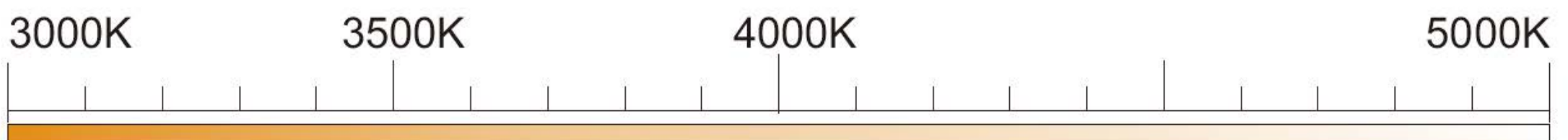


**PRODUCT SERIES**

**Regular Back-lit LED Panel Light Series**

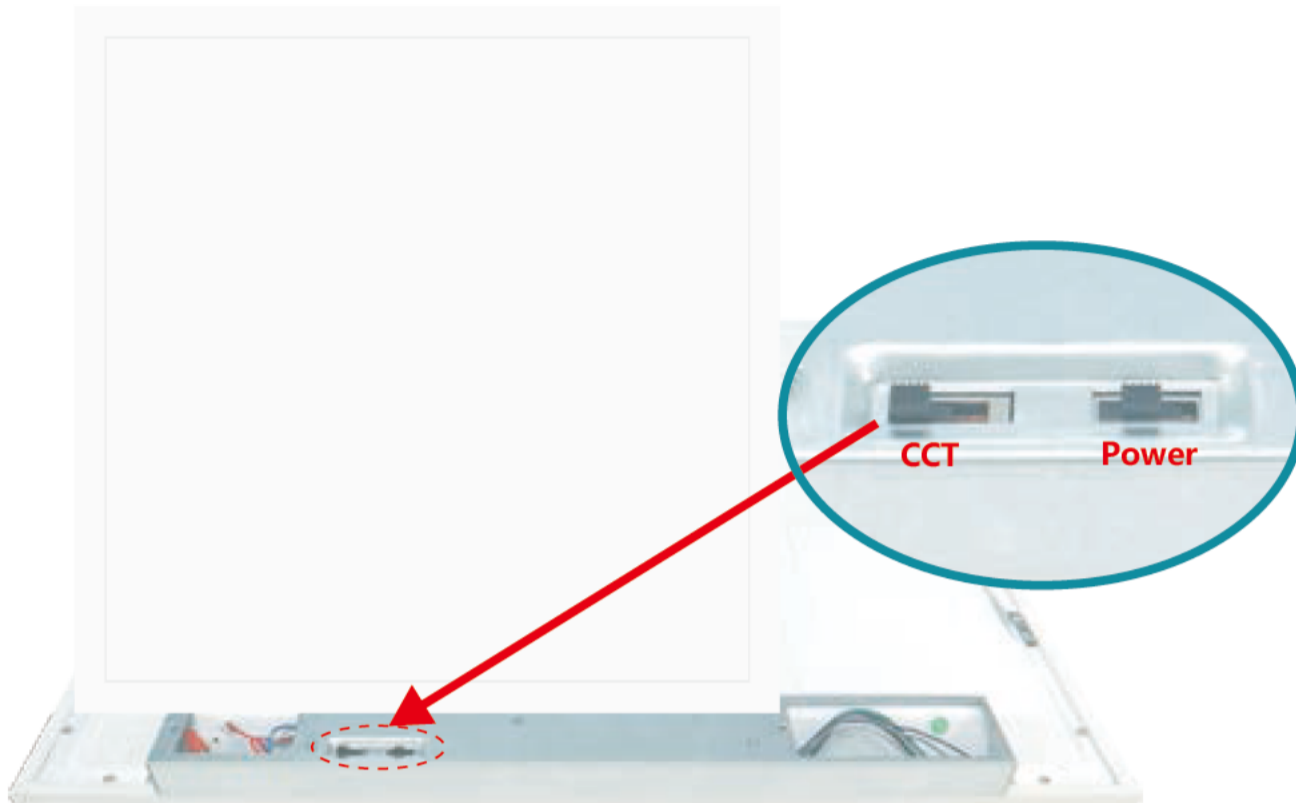


**2.4G Wireless CCT Tunable Back-lit LED Panel Light Series**



PRODUCT SERIES

Power & CCT Back-lit LED Panel Light Series



- 20W 3000K
- 20W 3500K
- 20W 4000K
- 20W 5000K
- 25W 3000K
- 25W 3500K
- 25W 4000K
- 25W 5000K
- 30W 3000K
- 30W 3500K
- 30W 4000K
- 30W 5000K
- 35W 3000K
- 35W 3500K
- 35W 4000K
- 35W 5000K

OPERATION

THE WALL TYPE REMOTE CONTROLLER



	Turn on     Turn off Wall-type remote controller can be used directly as a switch
	Long pressing (6-9 seconds) the button "ON" until the light goes out, the current brightness and color temperature are automatically saved. Turn off lights then turn on , the last saved brightness and color temperature will be displayed by default.
	Turn off the light to save the current color temperature then turn on the light , the last saved color temperature will be displayed by default.
	<p><b>Light code matching button</b></p> Pressing the 'ID' buttons simultaneously will keep the remote controller's indicator on, turn on the light and release the buttons after the light has been on for 2s completing the matching process. Matching code for several lights together is available. <div style="border: 1px solid gray; padding: 5px; background-color: #f0f0f0;">                     If you need to use both handheld controller and wall controller for the same light, please don't use this function, directly use the following copy function.                 </div>
<p style="color: red; font-size: 24px; font-weight: bold;">A</p>	<p><b>Brightness adjuster</b></p>
	Press the 'CCT' button, the color temperature will cycle between 3000K/3500K/4000K/5000K. After shutting down/turning off the current color temperature will be saved.

## OPERATION

### THE HANDHELD REMOTE CONTROLLER



	<p><b>ON</b> Turn on      <b>OFF</b> Turn off</p> <p>Handheld remote controller cannot be used directly as a switch, it should be used together with the switch.</p>
	<p>Turn off the light to save the current color temperature then turn on the light, the last saved color temperature will be displayed by default.</p>
	<p><b>Matching code for light</b></p> <p>Long pressing the 'ID' button will keep the controller's indicator on, then turn on the light and release the 'ID' button after the light flashes, matching code complete. Matching code for several lights simultaneously is available.</p>
	<p><b>Release the code and disconnect light from remote controller</b></p> <p>Press the button  together, then turn on the light, the light will flash to finish releasing the code on the lights.</p>
	<p><b>Group selecting button</b></p> <p>Grouping lights (matching code process needs to be completed first). Turn off the lights, continue pressing the group selection button for 3s, then turn on the lights, the lights will flash to finish grouping.</p>
	<p><b>Save button</b></p> <p>Long pressing (3-5 seconds) the button "SAVE" until the light goes out, the current brightness and color temperature are automatically saved. Turn off lights then turn on, the last saved brightness and color temperature will be displayed by default.</p>
	<p><b>All Groups are selected</b></p>

Power the light off then power it on, the last saved brightness (which is saved by the button "SAVE") and the last saved color temperature (which is saved by the button "SAVE" or "OFF") will be displayed by default. The defaulted factory setting of the light is 100% brightness and 4000K.

The matching method of handheld remote controller and wall-type remote controller, the wall controller can copy some of the functions of the handheld controller by the following method.

NO	Grouping	Handheld controller	Wall-type controller
1	1	1+ID	ON+CCT
2	2	2+ID	ON+CCT
3	3	3+ID	ON+CCT
4	4	4+ID	ON+CCT
5	ALL	ID	ON+CCT

After 10s of each operation the controller will enter standby power saving mode. If you need to make adjustments, simply press the "ON" button, the indicator will flash to show it is working. (If the controller is under working mode, the indicator will flash no matter which button is pressed).

Power the light off then power it on, the last saved brightness (which is saved by the button "ON") and the last saved color temperature (which is saved by the button "ON" or "OFF") will be displayed by default. The defaulted factory setting of the light is 100% brightness and 4000K.

## ORDERING INFORMATION - Regular Series

**Example:** NLV-BLP-R-VN-30W22-50K-277V-130LPW-DSE-WH

MODEL #	POWER	CCT (K)	Input Voltage	LM/W	Size
NLV-BLP-R-VN	25	30K 3000K	AC 120 - 277 V	130	2 x 2
	30	35K 3500K			
	35	40K 4000K	Or	OTH	1 x 4
	40	50K 5000K			
	50	57K 5700K			
			AC 120 – 347V		2 x 4

**NOTE: 40W and 50W are only available in 2 x 4 size**

**Options:**

- DDM - Dimming function
- DDS – Dimming + Sensing function
- DDE – Dimming + Emergency function
- DSE – Dimming + Sensing + Emergency function

**Color :**

- WH – White
- CC – Custom Color

## ORDERING INFORMATION – Tunable Series

### Example:

**Power & CCT Tunable:** NLV-BLP-T-VN-50W24-50K-277V-130LPW-DSE-WH

**Wireless CCT Tunable :** NLV-BLP-W-VN-35W22-50K-277V-130LPW-DSE-WH

MODEL #	POWER	CCT (K)	Input Voltage	LM/W	Size
NLV-BLP-T-VN	20-25-30-35	30K 3000K 35K 3500K	AC 120 - 277 V	130	2 x 2 1 x 4
NLV-BLP-W-VN	35-40-45-50	40K 4000K 50K 5000K	Or AC 120 – 347V	OTH	2 x 4

**NOTE:** 20-25-30-35 W series is available in 2x2 and 1x4 sizes  
35-40-45-50 W series is available in 2 x 4 size only

#### Options:

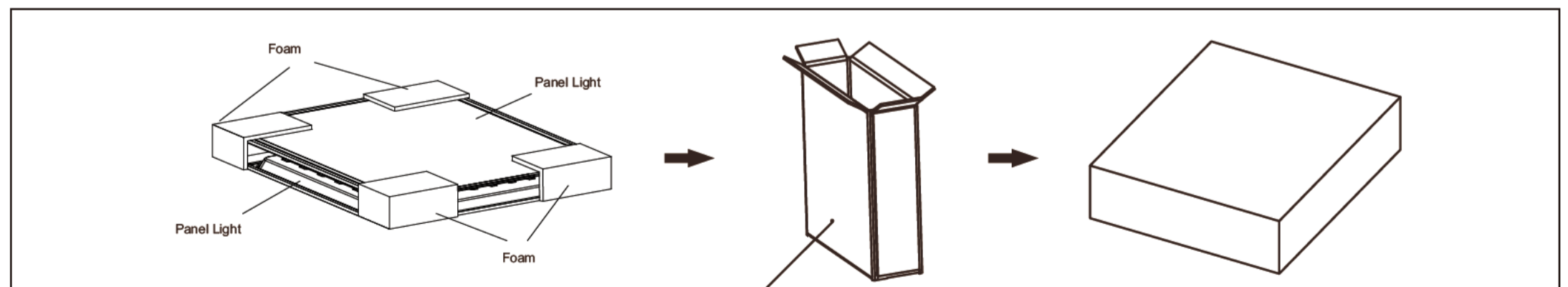
- DDM - Dimming function
- DDS – Dimming + Sensing function
- DDE – Dimming + Emergency function
- DSE – Dimming + Sensing + Emergency function

#### Color :

- WH – White
- CC – Custom Color

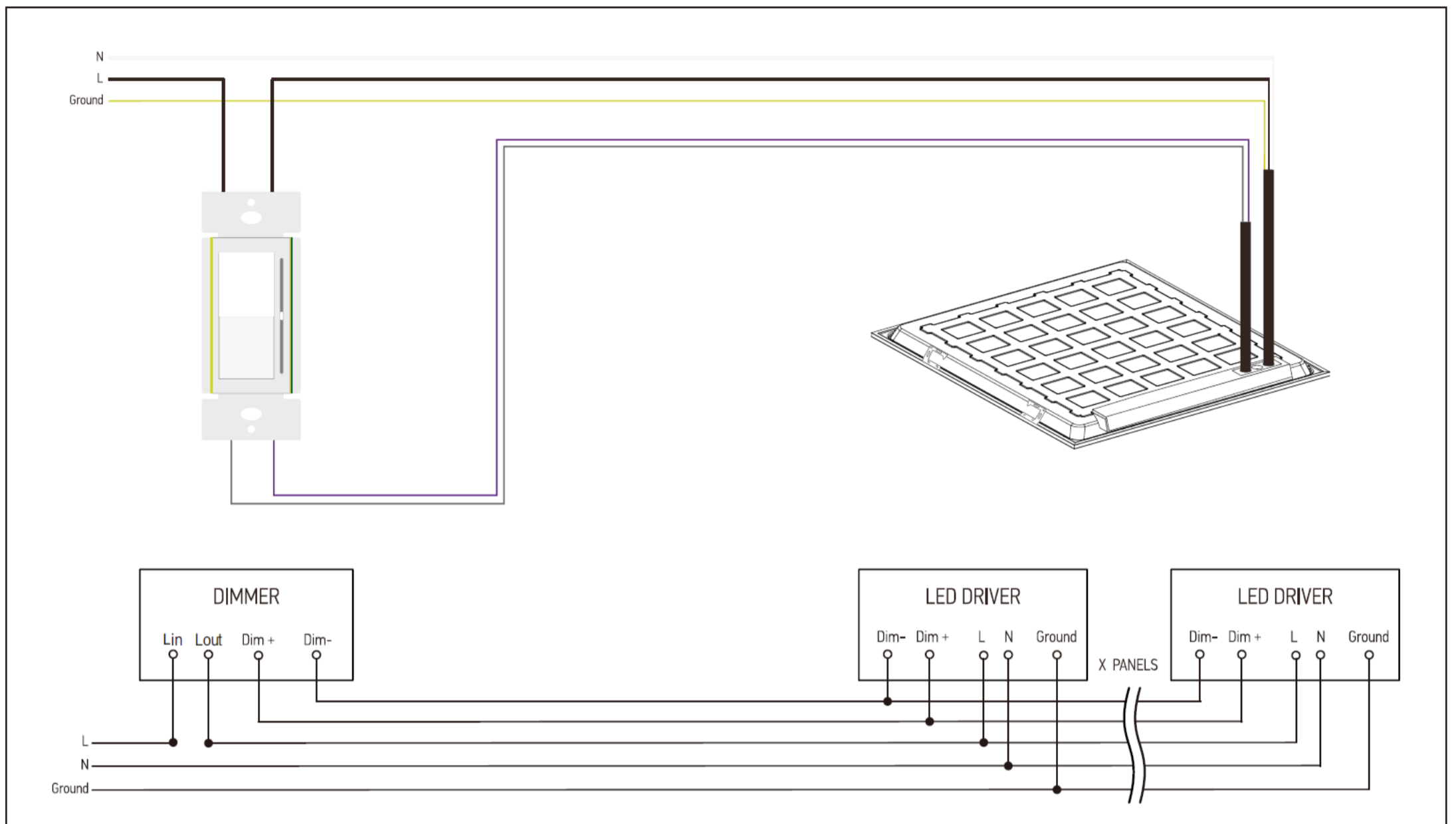
## PACKAGING INFORMATION

Item (inch)	N.W (lbs)	Carton Size (inch)	QTY/ctn(pcs)	G.W/ctn(lbs)	Qty loaded by 20GP	Qty loaded by 40GP	Qty loaded by 40HQ
24*24	5.07	25.39*3.94*25.59	2	11.5	1620 pcs	3264 pcs	4032 pcs
12*48	5.51	49.4*3.94*13.78	2	12.6	1544 pcs	3240 pcs	3774 pcs
24*48	9.26	49.4*3.94*25.59	2	20.5	800 pcs	1668 pcs	2070 pcs





## ELECTRICAL SCHEMATIC DIAGRAM



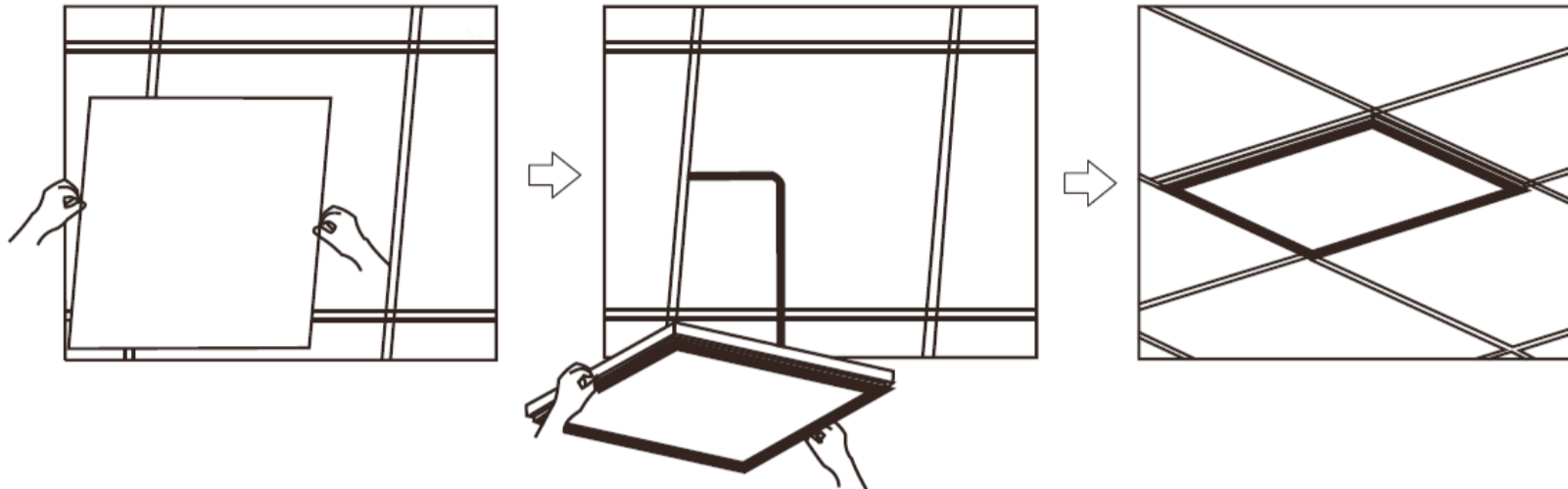
## INSTALLATION - SAFETY NOTICE

The installation of these fixtures shall be done by licensed and qualified contractors only. NLV Lighting shall not held liable for any personnel or property damage.

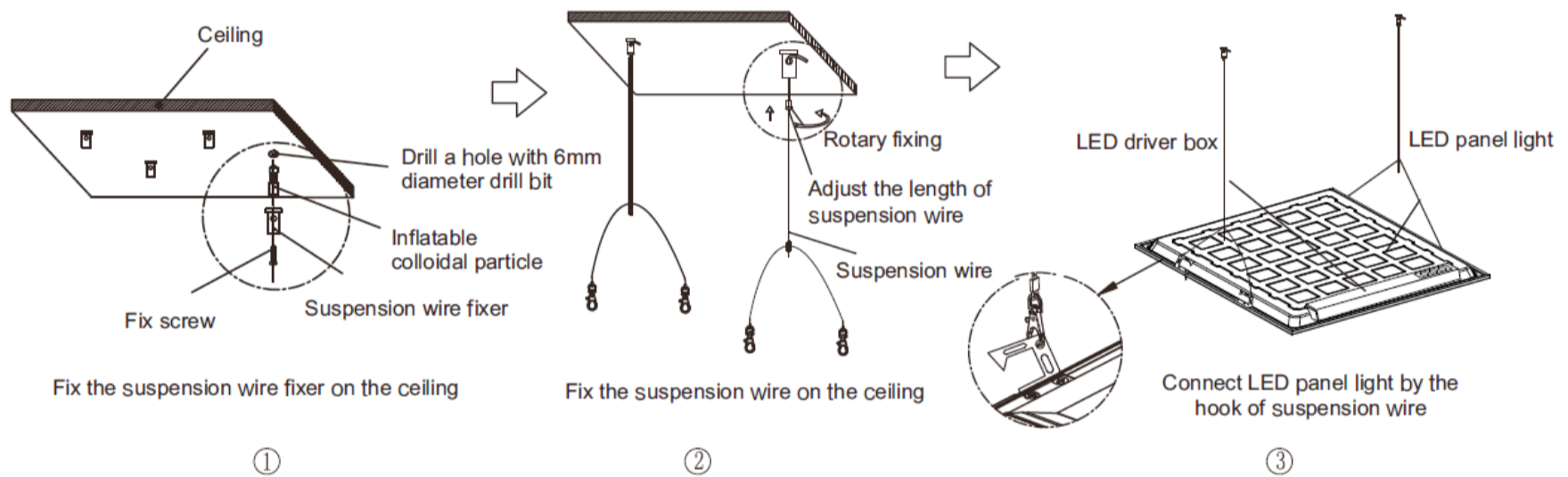
- Turn power off before inspection, installation or removal
- Properly ground all electrical enclosures
- Follow local codes and all NEC codes
- Use only UL or IEC approved Wires and other electrical accessories required
- Check the supply voltage and protect the lighting circuit by 15 -20A circuit breaker

# INSTALLATION

## Recessed Mounted Installation



## Suspending Installation



## Surface Mounted Installation

<p>①</p>	<p>②</p>	<p>③</p>
<p>④</p>	<ol style="list-style-type: none"> <li>1. Parts A1, A2, B1, B2;</li> <li>2. First install A1, A2, and B1(as illustrated);</li> <li>3. As is shown in the figure, fix A1 and A2 on the ceiling or on the roof, and then insert the Back-lit panel light directly (the end with power source enters later);</li> <li>4. Install B2, finish installation.</li> </ol>	



## Contact Info

Address: 177 Park Ave, #200, San Jose CA 95113

Email: [info@nlvlighting.com](mailto:info@nlvlighting.com)

Phone number: +1-408-641-1848

[www.nlvlighting.com](http://www.nlvlighting.com)

